


mirror

Wall hanger installation instructions


Tools required

- Phillips screw driver or bit
- drill
- 3/32 drill bit (drywall/stud)
- 5/32 drill bit (concrete)
- stud finder
- pencil / pen

 Failure to follow installation instructions can cause injury or result in damage to your device.

Package contents

- Mirror wall hanger (1x)
- wood/drywall screws (3x)
- concrete screws (3x)
- wall anchors (3x)
- protective wall strip (1x)
- Swivl sticker (1x)

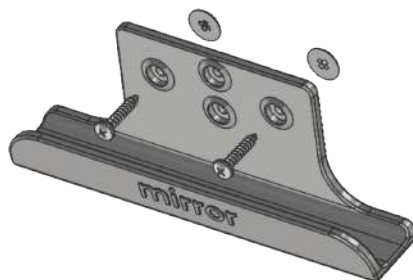
 Extra hardware is included in case of damage or loss. Only two screws are required for each surface.

Section 1: Dry wall installation

1. Select desired location for mounting Mirror. Locations with an outlet close by are recommended. Once selected, use a pencil/pen to mark the hanger's location using the **horizontal** holes.



3. Using the black drywall/stud screws, secure the hanger to the anchors.



2. With hole locations marked, drill 2 holes using your 3/32 bit. Screw dry wall anchors down into the pilot holes until flush as shown.



4. Place Mirror onto the hanger and test stability. Apply the protective wall strip where the bottom of Mirror comes into contact with the wall.

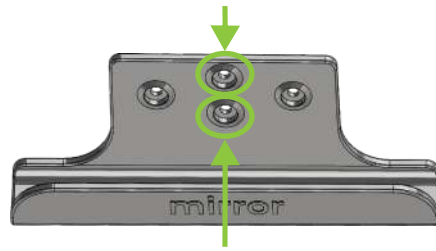


Section 2: Stud installation

1. Locate a stud using a stud finder.
Locations with an outlet close by are recommended.



2. Place hanger within stud boundary and hand tighten 2x screws using vertical holes shown below.



3. Tighten screws using black drywall/stud screws as shown.

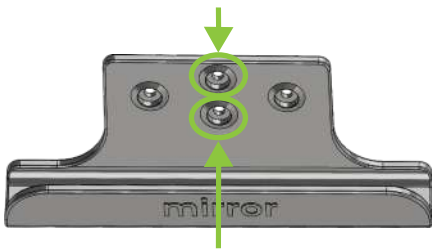


4. Place Mirror onto the hanger and test stability. Apply the protective wall strip where the bottom of Mirror comes into contact with the wall.



Section 3: Concrete installation

1. Select desired location for mounting Mirror. Locations with an outlet close by are recommended. Once selected, use a pencil/pen to mark the hanger's location using the **vertical** holes.



2. With hole locations marked, drill 2 holes using the 5/32 bit. Screw concrete anchors down into the pilot holes until flush as shown.



3. Using the gray screws, secure the hanger to the wall.



4. Place Mirror onto the hanger and test stability. Apply the protective wall strip where the bottom of Mirror comes into contact with the wall.

